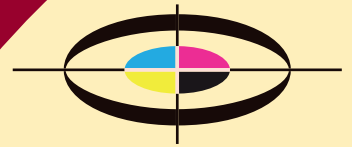


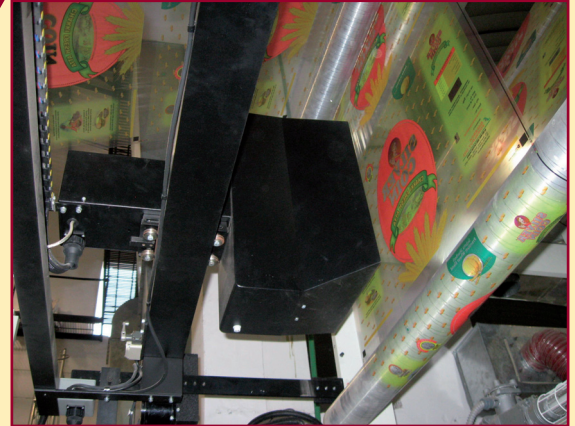
A.V.I.S.



TecScan
print inspection

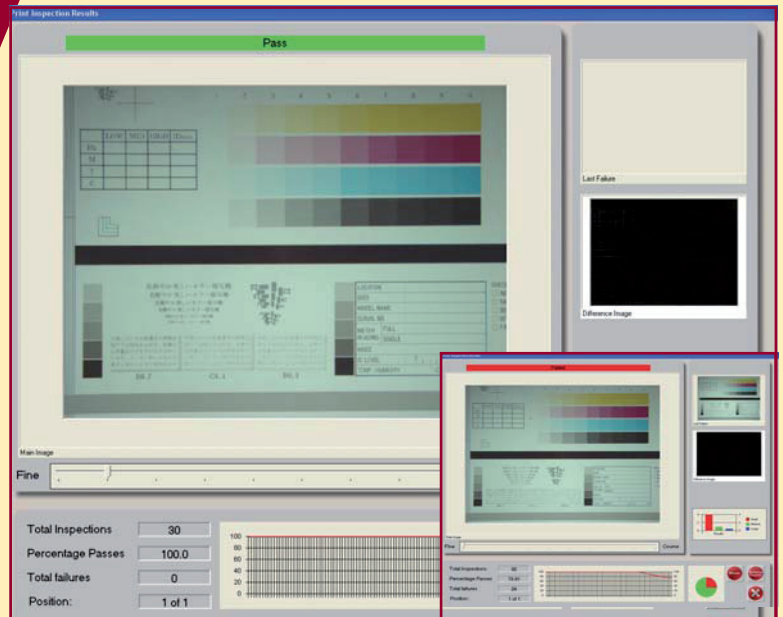
The Advanced Video Inspection System

- Substantially increases consistency
- Substantially increases quality
- Reduces waste
- Increases speed
- Saves material costs



The A.V.I.S. system detects

- Misregistration
- Plate damage
- Missing ink
- Streaking
- Ink Blobs
- Defects



FEATURES

Defect sensitivity control

Programmable digital image storage

Automatic print quality supervision

Quick set-up, ideal for short runs

Optional touch screen monitor

Designed for all web based printing machines

*Advanced digital firewire image hardware
for superior quality*

Dedicated state of the art software

Area of view 230mm x 185mm (other sizes on application)

DEFECT DETECTION SYSTEMS FOR :

- Labels
- Metallised
- Paper
- Packaging
- Security UV print
- Embossed Holograms



OPERATION

The system is synchronised to the repeat length.

The image position and zoom ratio can be adjusted using operator-friendly on screen controls.

Intuitive menu-driven set up allows the operator to utilise the full range of Tecscans powerful inspection software.

Program mode allows set positions along and across the web to be inspected automatically with or without defect detection.

Scan mode allows automatic 100% repeat length inspection with or without defect detection.

Store and recall images and camera locations for picture-in-picture comparison.

Store and recall job set ups to minimise set up time.

Store split screen images to be recalled for live image comparison.

Burn images to CD for customer verification or forwarding with the job.

SPECIFICATIONS *

Please note that TECSCAN reserves the right to alter the specification without notice *

Touch Screen TFT
17" TFT
SXGA 1280 x 1024 max
0.264 mm (H) x 0.264 mm (V)
16.7 million colours Max
Viewing angle H:+ - 60x max V:+ - 60x max
Tilt +30 degrees, -5 degrees
Active display area 337.9mm(H) x 270.3mm(V)
AC input 100– 240v 50-60 hz
Dc output +12v DC 4-6A Max
Dimensions 445mm (W) x 440mm (H) x 190mm (D)
Weight 8.7kgs (unpacked)
Temperature Operation 0—40 degrees C
<i>Optional extra</i> - panel mount
Traverse
Motorised Heavy duty stepper motor driven traverse
Movement controlled from on screen menu,
Automatic movement
Traverse speed 8 inches per second
Synchronising to the machine
By Special optical 1024 pulse encoder
Eyemark or fork sensor for image stability even under start and stop

Lens
Close up lens [diopetre]: +2
Zoom, Aperture and focus functions are motorised
Controlled from the touch screen keypad
Focus is set right through the zoom range
Standard Image size at maximum angle 230mm x 185mm
Larger areas available P.O.A
Connections
All connections are plug and socket
Camera Enclosure to control unit is through a 20mm armoured conduit and terminated with an industrial robust plug.
Strobe Illumination
Strobe xenon - 2
Energy per flash - 2 x 1.8 jules
Microprocessor control
Strobe life average - 3 years
Industrial PC
AMD 3200xp processor
128mb graphics card (AGP)
120 GB 7200rpm hard drive
512mb memory
52 x CDRW
3.5" Floppy drive
4 port fire wire card
Industrial 19" rack mounted case
<i>Optional extra</i> - enclosed in rittal cabinet
Camera spec
3,75Hz; 7,5Hz; 10 Hz
SXGA 1392 x 1040 progressive CCD
High Quality image
Case size 430mm x 620mm x 500mm
C-Mount, CS-Mount
Optically decoupled asynchronous trigger-Shutter
Wide-Range Manual Gain
Manual Exposure (Shutter)
Gamma On/Off
Programmable LUT
Real Time Shading Correction
Image FIFO 3 frames
Lockable IEEE1394-Connector
12-Pin Hirose